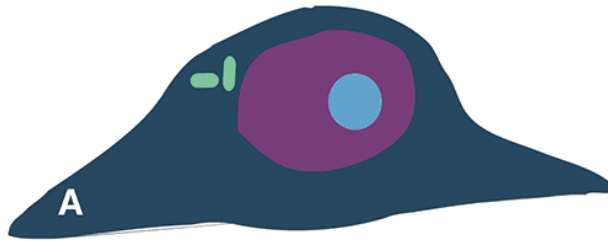


CELLS alive! - Mitosis Cell Parts Worksheet

(Draw a line to the part in the [picture] and give its function.)

Nucleus [A]

-It is the center of the cell

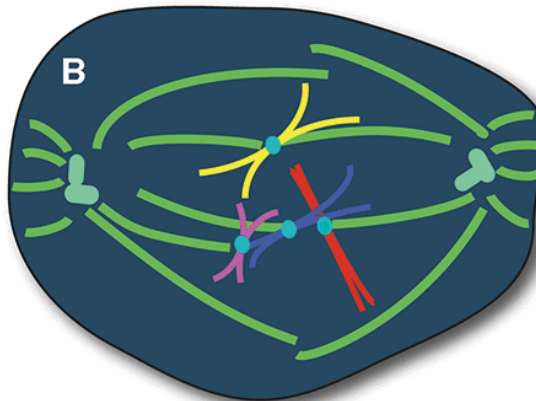


Nucleolus [A]

-Small and dense sphere in the

Kinetochores [B]

-Protein structure on the
chromatid

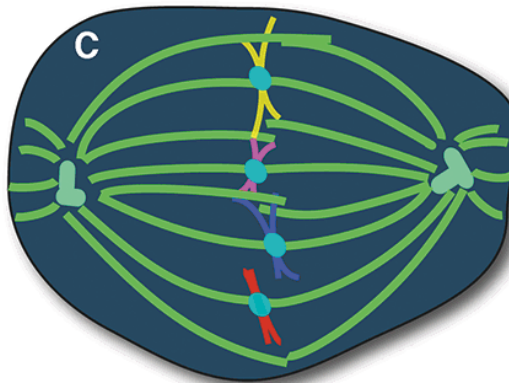


Chromatid [B]

-A copy of a newly copied
chromosome that is still
joined to the original

Spindle [C]

-Microscopic tubular structure
that is found in cells, sometimes
aggregating to form more
complex structures

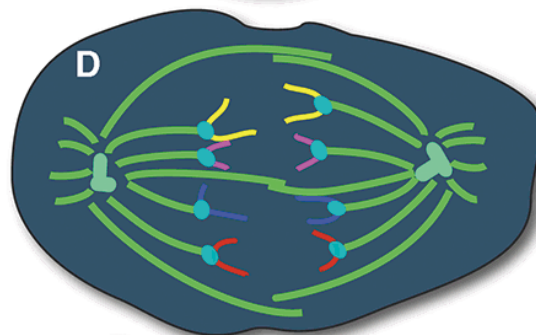


Microtubule [C]

-Web-like structure made
of fibers and it arranges the
chromosomes

Cytoplasm [D]

-The material within a cell,
excluding the nucleus



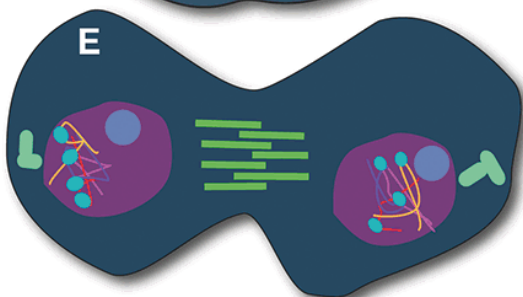
Centrosome [D]

-It organizes the
microtubules

Cleavage

Furrow [E]

-The indentation of the cells
surface that begins the
progression of cleavage that
represents the splitting of the cell



Contractile Ring [E]

-Formed during cytokinesis,
the last step of cell division
