

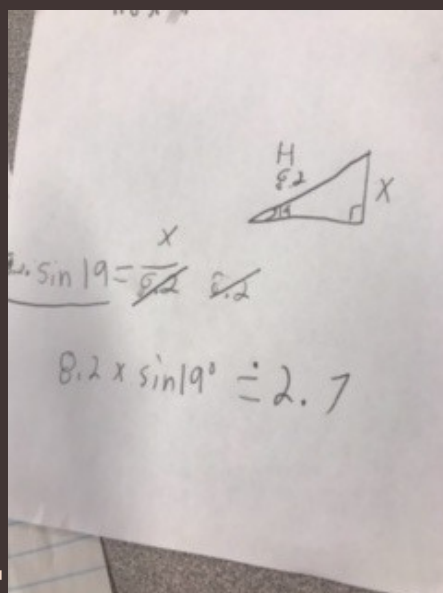
# SINE, COSINE, AND TANGENT

## THREE MOST IMPORTANT PARTS OF TRIGONOMETRY

1

### SINE

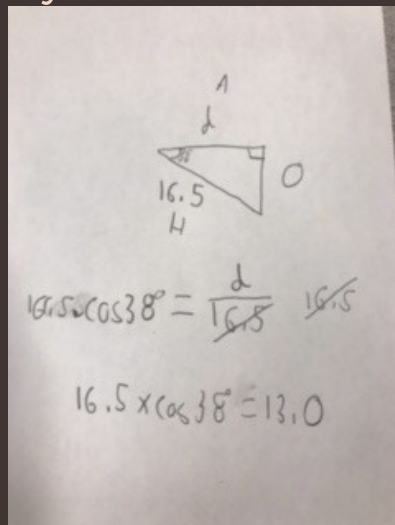
Sine is one of the formulas to find the angle of a triangle. to find the sine of a right angled triangle you divide the measurement opposite to the the angle your trying to find known as the opposite. This is also known as SOH.



2

### COSINE

Cosine is adjacent side divided by the hypotenuse of the triangle to get the degree you need. This is also known as CAH.



3

### TANGENT

Finally Tangent is the opposite side divided adjacent side. this is the only formula that doesn't have the hypotenuse as the denominator. This is also known as TOA

