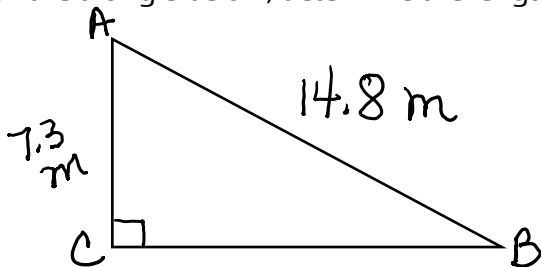


Midterm Flashback #1

1. Write the prime factorization of 232. Is it a perfect square or cube? How do you know?
2. Determine the GCF of 60 and 105.
3. Evaluate $-(3 + 5)^0$
4. Simplify: $6x^2(-3x^8)\left(\frac{1}{2}x\right)$
5. Evaluate $\left(\frac{2}{3}\right)^{-3}$
6. Write 3 450 000 000 000 in scientific notation
7. Given the triangle below, determine the length of AB and angle B.



8. If a 10 metre tree casts a 13.4 metre shadow, what is the angle of elevation of the sun?
9. Simplify: $(5x^2 - 3x) + 2(10 - 4x) - (7x^2 + x - 5)$
10. Expand and simplify $(3x - 4)^2$