

FORGIVENESS

COMPASSION

CONNECTION



SUPPORTING

HUMANITY

"THE WORLD OF HARRY POTTER IS CHARACTERIZED BY STRICT SOCIAL HIERARCHIES AND RESULTING PREJUDICES, WITH OBVIOUS PARALLELS WITH OUR SOCIETY."

MEGAN SCHMIDT

HUMAN SOCIETY IS TRYING TO IMPROVE BY BETTERING ITSELF FROM THE OLD GENERATION. THE OLDER GENERATION DID NOT HAVE ACCESS TO DEVELOPED TECHNOLOGY LIKE TODAY. NOW EVERYTHING IS SURROUNDED BY TECHNOLOGY. WE ARE ALL NOT INTERCONNECTING WITH TECHNOLOGY BECAUSE AS IT IS DEVELOPING, IT BECOMES MORE EXPENSIVE TO ACCESS. AS A RESULT, ONLY PEOPLE WITH A HIGH INCOME CAN AFFORD IT.

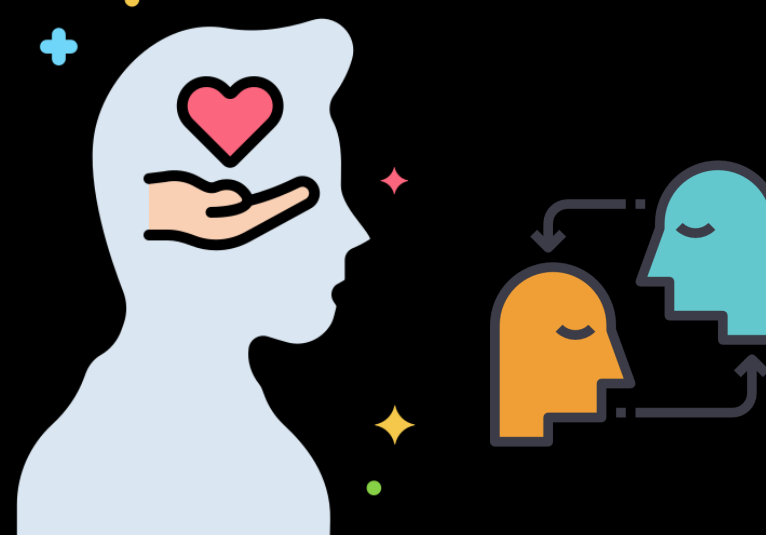


"CONNECT WITH OTHERS IN A MEANINGFUL WAY" AND THAT LONELY PEOPLE WERE NO MORE LIKELY TO USE SOCIAL MEDIA.

JOHN SCOTT

IF WE ALL CONNECT IN A MEANINGFUL WAY, FOR EXAMPLE, BY VISITING FAMILY AND FRIENDS INSTEAD OF CONNECTING THROUGH SOCIAL MEDIA PLATFORMS, AS A RESULT, WE WILL HAVE LESS TIME TO SPEND ALONE ON SOCIAL MEDIA AND WE WILL BE MORE CONNECTED WITH ONE ANOTHER.

POSITIVE



"PEOPLE WITHOUT MAGICAL POWERS ARE DISCRIMINATED AGAINST IN THE SERIES, FOR INSTANCE."

MEGAN SCHMIDT

HUMAN BEINGS HAVE BEEN EVOLVING THROUGHOUT HISTORY ON DIFFERENT LEVELS, YET WHEN IT COMES TO INTERCONNECTING WITH ONE ANOTHER, IT HAS ALWAYS BEEN CHALLENGING TO DO SO. WE, AS A DIVERSE SPECIES, HAVE BEEN DIVIDED ON DIFFERENT GROUNDS LIKE SKIN COLOR, GEOGRAPHY, AND MANY MORE. AS A RESULT, WE HAVE BEEN DISCRIMINATING, BULLYING, DIFFERENTIATING AGAINST EACH OTHER. IN CONCLUSION, HUMAN BEINGS HAVE NOT REACHED A HIGH LEVEL OF ACCEPTANCE AND INTERCONNECTEDNESS.

YOUR WORTH IS NOT MEASURED IN LIKES, COMMENTS, NOTES OR FOLLOWERS.

JINM PIPE

NOWADAYS, INDIVIDUALS BELIEVE THAT THEIR SOCIAL WORTH IS MEASURED BY LIKES, COMMENTS, AND FOLLOWERS ON SOCIAL MEDIA. WHEN IN REALITY, YOUR WORTH IS DETERMINED BY HOW GENERIC, KIND, AND EMPATHETIC YOU CAN BE TOWARD OTHERS IN SOCIETY.



HELPLEFUL



KINDNESS

CARING

FELLING

LOVING



TRUSTING