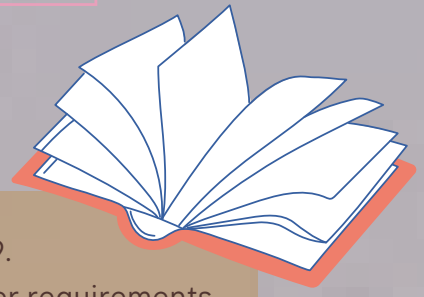


STATION ELEVEN INTRODUCTION

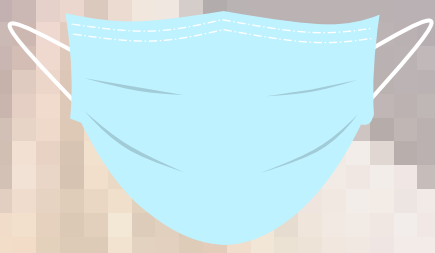
Background information on the author:

- Emily St. John Mandel was born in British Columbia in 1979.
- She was homeschooled until she was fifteen and one of her requirements was to write something every day.
- She studied contemporary dance at The School of Toronto Dance Theatre.
- Station Eleven was her fourth of six novels and it was her break out novel, published in 2014.
- She is also an essayist.



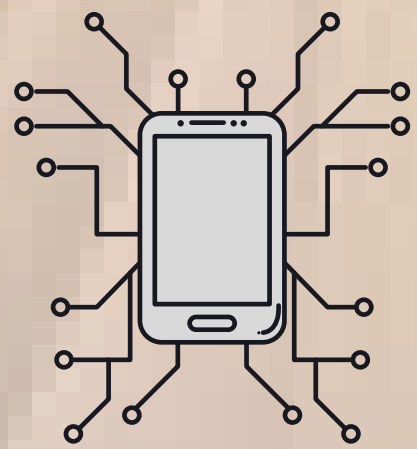
What is a Pandemic?

- A pandemic is an escalated or global epidemic, affecting more than one continent.
- The characteristics of pandemics and other such outbreaks can be identified by an infection, though other physical and innate conditions/behaviours can be defined similarly such as opioid crises, hypertension, and cancer
- pandemic vs outbreak or epidemic is the number of cases compared to the projected cases, and how far geographically it has spread; pandemic being the farthest spread.



What would life be like without technology?

Less misinformation, but access to information restricted
Simple tasks become harder to carry out
Opportunities for progression and innovation decrease
Harder to meet new people, but relationships become higher quality and more fulfilling



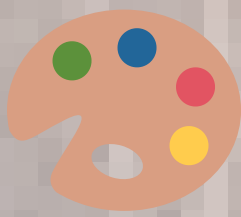
Define survival and what does that mean?

- the act or fact of living or continuing longer than another person or thing ("Merriam-Webster Dictionary")
- simply continuing to stay alive, though not always living.



Why is religion important to a society?

Provides moral values.
Provides many a purpose for living.
Provides structure and order within a civilization.
Reinforces stability and social unity when implemented correctly; controls social behaviour
Individuals tend to have a better bond with family and close knit community
Allows people to remain optimistic about life and its course



Why is art important in a society?

Enables sense of self expression.
Enables diversity and perspective variation
Form of communication.
Enables human development / advancements.
Holds economic and cultural value in many communities.
Serves as a method of education and allows for easy grasp of ideologies.

