

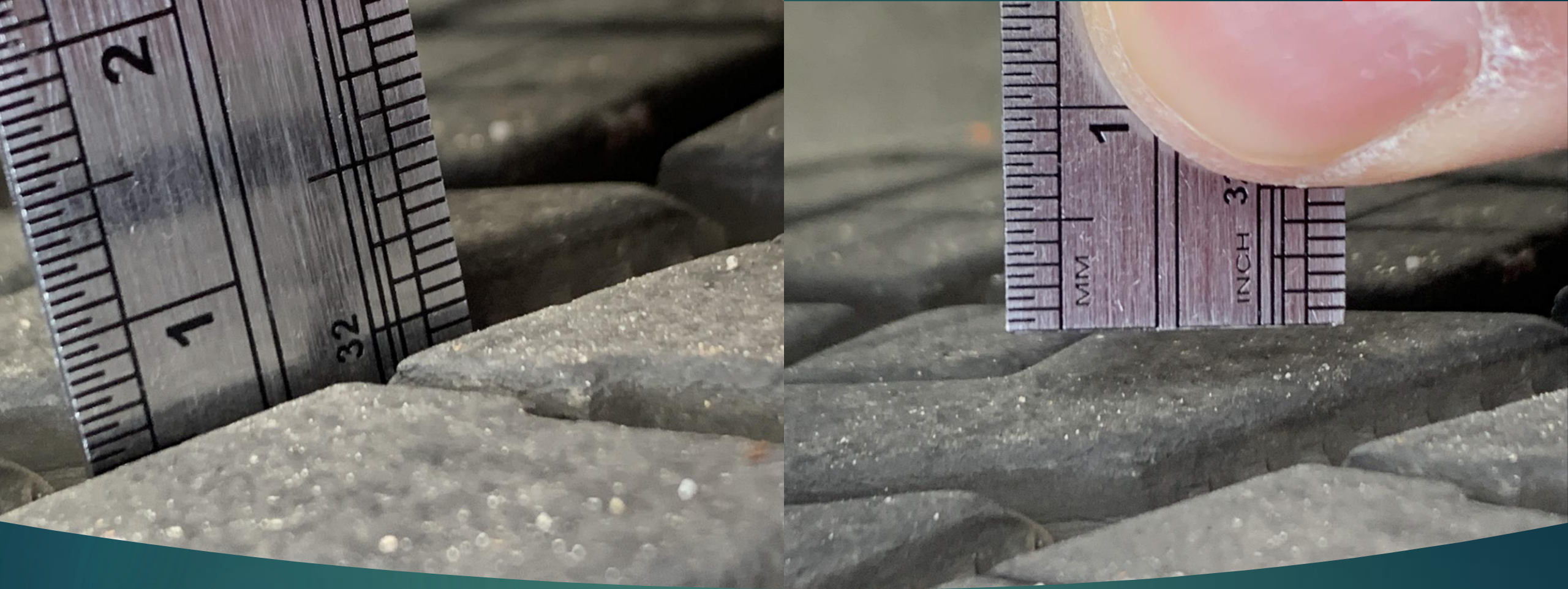
Automotive vehicle inspection

Vehicle Body

YEAR/MAKE/MODEL/TRIM

2015 Ford Mustang GT

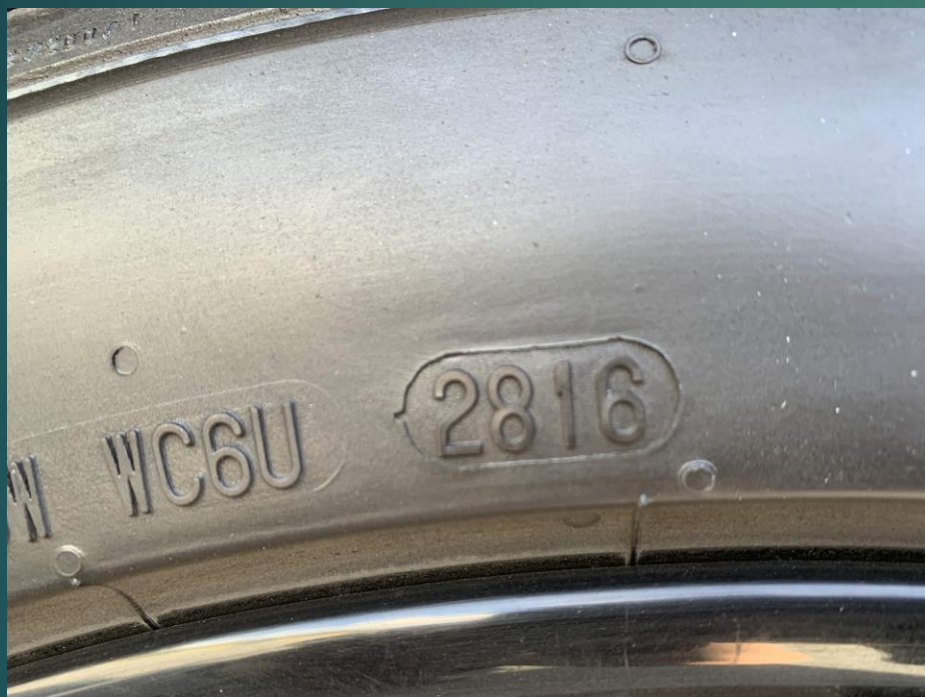





TIRE TREAD DEPTH

TIRE TREAD AT $\frac{8}{32}$ " (NEW TIRES ARE TYPICALLY $\frac{11}{32}$ "

TIRE SIZE AND MANUFACTURING DATE



 **RENSEIGNEMENTS SUR LES PNEUS**

SEATING CAPACITY NOMBRE DE PLACES	TOTAL	4	FR AV
--------------------------------------	-------	---	----------

The combined weight of occupants and cargo should never exceed the weight limit.
Le poids total des occupants et du chargement ne doit jamais dépasser la limite de poids.

▽5U5A-1532-AA (TLC)

TIRE PNEU	SIZE DIMENSIONS	COLD TIRE PRESSURE PRESSION DES PNEUS À FROID
FRONT AVANT	255/40ZR19 96Y	220 KPA, 32 PSI
REAR ARRIÈRE	275/40ZR19 101Y	220 KPA, 32 PSI
SPARE DE SECOURS	NONE	NONE

TIRE INFLATION SPEC

32 PSI FRONT AND REAR

PADS AND ROTORS



No cracks, grooves, or gouges



Estimated 8mm pad thickness



BRAKE HOSES



Brake hoses are dry with no signs of leaking or swelling

Owner's manual maintenance schedule

Scheduled Maintenance	
Check every month	
Engine oil level.	
Function of all interior and exterior lights.	
Tires (including spare) for wear and proper pressure.	
Windshield washer fluid level.	
Check every six months	
Battery connections. Clean if necessary.	
Body and door drain holes for obstructions. Clean if necessary.	
Cooling system fluid level and coolant strength.	
Door weatherstrips for wear. Lubricate if necessary.	
Hinges, latches and outside locks for proper operation. Lubricate if necessary.	
Parking brake for proper operation.	
Safety belts and seat latches for wear and function.	
Safety warning lamps (brake, ABS, airbag and safety belt) for operation.	
Washer spray and wiper operation. Clean or replace blades as necessary.	

Multi-Point Inspection

In order to keep your vehicle running right, it is important to have the systems on your vehicle checked regularly. This can help identify potential issues and prevent major problems. We recommend having the following multi-point inspection performed at every scheduled maintenance interval to help make sure your vehicle keeps running great.

Scheduled Maintenance	
When to expect the OIL CHANGE REQUIRED message	
Interval	Vehicle use and example
7,000–10,000 mi (12,000–16,000 km)	Normal Normal commuting with highway driving No, or moderate, load or towing Flat to moderately hilly roads No extended idling
5,000–7,000 mi (8,000–11,999 km)	Severe Moderate to heavy load or towing Mountainous or off-road conditions Extended idling Extended hot or cold operation
3,000–5,000 mi (4,800–7,999 km)	Extreme Maximum load or towing Extreme hot or cold operation

Normal Maintenance Intervals

At every oil change interval as indicated by the information display*

Change engine oil and filter.**

Rotate tires, inspect tire wear and measure tread depth.

Perform a multi-point inspection (recommended).

Inspect the automatic transmission fluid level (if equipped with dipstick). Consult your dealer for requirements.

Inspect the brake pads, shoes, rotors, drums, brake linings, hoses and parking brake.

Inspect the engine cooling system strength and hoses.

Inspect the exhaust system and heat shields.

Inspect the steering linkage, ball joints, suspension, tie-rod ends, driveshaft and U-joints. Lubricate if equipped with grease fittings.

Oil change interval as indicated by the information display	
Inspect the half-shaft boots.	
Inspect the steering linkage, ball joints, suspension, tie-rod ends, driveshaft and U-joints. Lubricate any areas with grease fittings.	
Inspect the wheels and related components for abnormal noise, wear, loose drag.	
* Do not exceed one year or 10,000 mi (16,000 km) between service intervals.	
** Reset the Intelligent Oil-Life engine oil and filter changes.	
Other maintenance items ¹	
Every 20,000 mi (32,000 km)	Replace cabin air filter.
Every 30,000 mi (48,000 km)	Replace engine air filter.
At 100,000 mi (160,000 km)	Change engine coolant. ²
Every 100,000 mi (160,000 km)	Replace spark plugs.
Every 100,000 mi (160,000 km)	Inspect accessory drive belt(s). ³
Every 100,000 mi (160,000 km)	Change automatic transmission fluid and filter.
Every 150,000 mi (240,000 km)	Change manual transmission fluid.
Every 150,000 mi (240,000 km)	Replace accessory drive belt(s).

Perform these maintenance items within 3,000 mi (4,800 km) of the last engine oil and filter change. Do not exceed the designated distance for the interval.

¹ Initial replacement at six years or 100,000 mi (160,000 km), then every three years or 50,000 mi (80,000 km).

² After initial inspection, inspect every other oil change until replaced.

Paint defects



Under the body



SHOCKS AND SPRINGS

- Shocks and springs are free of leaks and damage

CV DRIVE AXLES

- ▶ CV boot has no leaks or tears



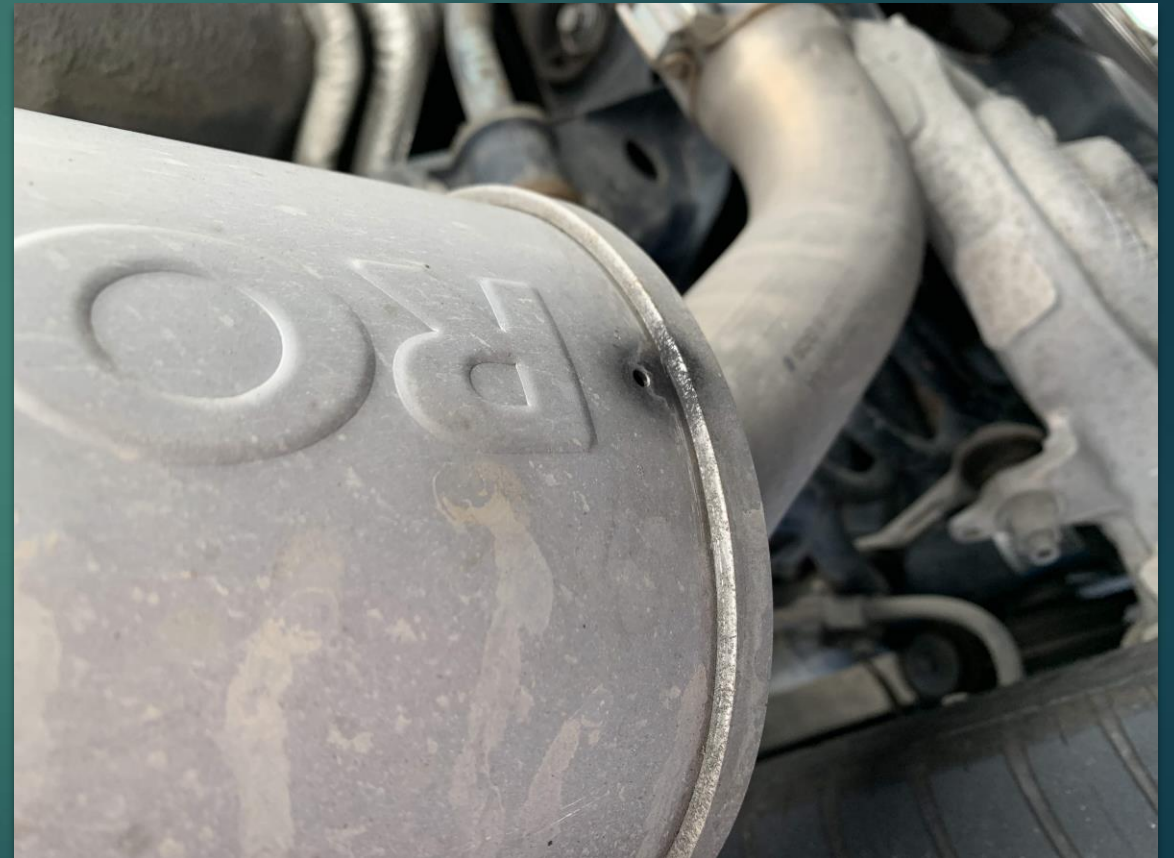
TIE RODS AND BALL JOINTS



- Tie rods, ball joints, and other bushings are clean without signs of wear, damage, or leaks

EXHAUST PIPE AND MUFFLERS

- ▶ Exhaust pipe and muffler free of rust or other damage





- Body and frame are free of rust and oxidization

BODY AND FRAME RUST

Under the Hood

AIR FILTER

- Air filter is in need of replacement



BRAKE FLUID

- ▶ Brake fluid is at the correct level and is a clear apple juice colour



COOLANT AND HOSES

- ▶ Coolant levels are not adequate and need topping up
- ▶ Upper and lower coolant hoses are firm and pliable





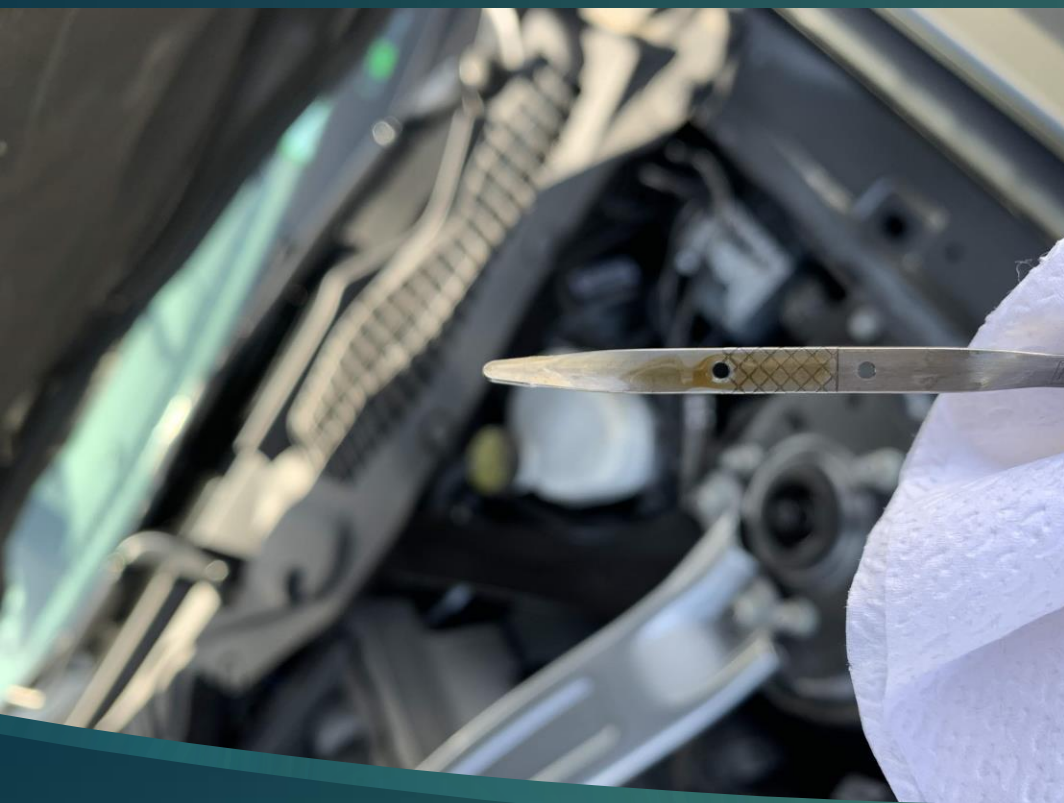
BATTERY

- ▶ Battery posts are clean and free of oxidization

DRIVE BELTS

- ▶ Drive belt is in good condition. No cracks or tears





- Oil level is full and clean



- 5W-20 oil type

OIL LEVEL AND TYPE