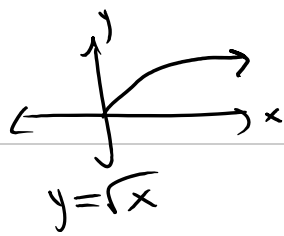


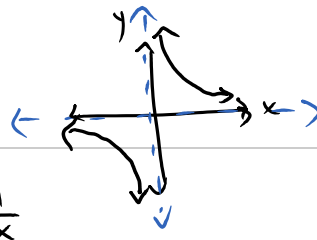
# Outline

March-11-13 2:10 PM



$$y = \sqrt{x}$$

$$y = \frac{1}{x}$$



## Analyzing Radical and Rational Functions Unit Outline | Pre-Calc 12

Lesson	Assignment
1. Radical Functions Parts 1 & 2	p. 444 # 2 - 5 p. 451 # 1-12
2. Rational Functions - Asymptotes	p. 461 # 1-9
3. Rational Functions - Points of Discontinuity	p. 469 # 3 - 7, 11, 12
4. Graphs of Rational Functions	p. 477 # 1-5
5. Solving Radical and Rational Equations Graphically	p. 483 # 1-5, 8, 9
6. Solving Radical and Rational Equations Algebraically	Worksheets
7. Review	p. 489 # All
8. Test	_____

Where ever possible avoid the use of a calculator to increase your numeracy skills.

### PLO's

B13. Graph and analyze radical functions (limited to functions involving one radical).

B14. Graph and analyze rational functions (limited to numerators and denominators that are monomials, binomials or trinomials).

$$y = a f [b(x-h)] + k$$

