

CELLS alive! - Mitosis Phase Worksheet

(Match the picture to the phase & tell what's happening now.)

Interphase(1)(G)

the resting phase between successive mitotic divisions of cell

Prophase(F)

the first stage of cell division

Prometaphase(A)

The second phase of mitosis where the nuclear envelope breaks down

Metaphase(E)

The second stage of cell division

Anaphase(H)

The stage of meiotic or mitotic cell division

Telophase(C)

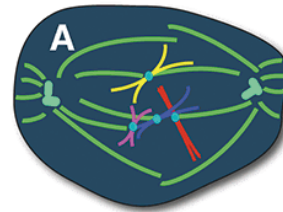
The final phase of cell division

Cytokinesis(A)

The cytoplasmic division of a cell

Interphase(2)(B)

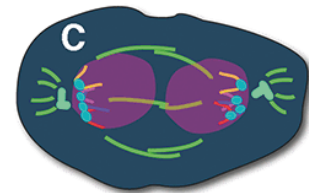
Cell division.



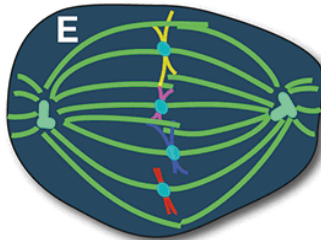
A) Cytokineses



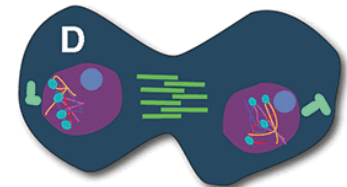
B) Interphase 2



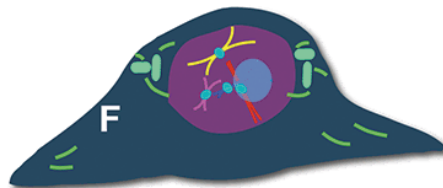
C) Telophase



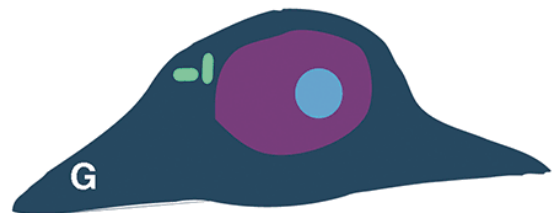
E) Metaphase



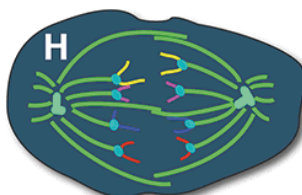
D) Telophase



F) Prophase



G) Interphase



H) Anaphase