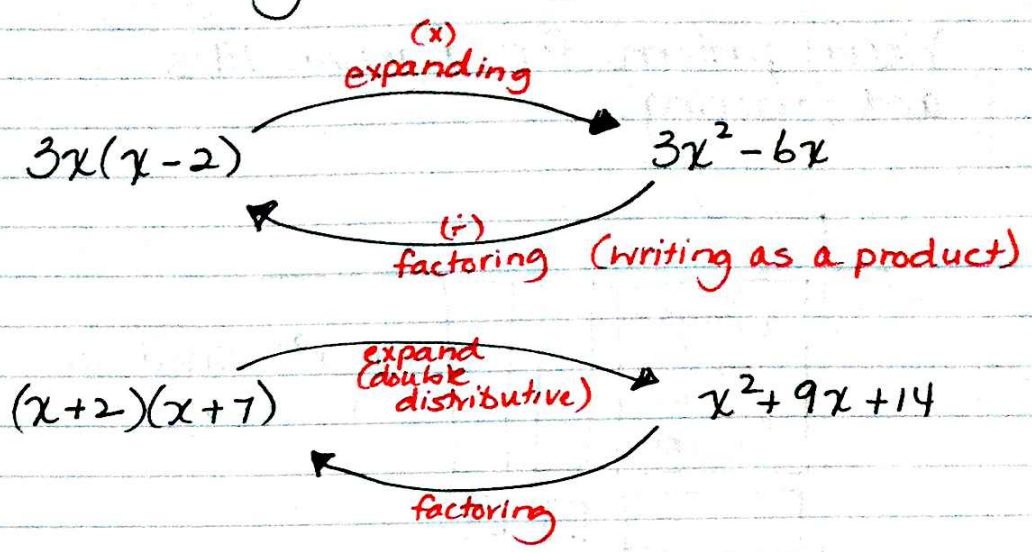
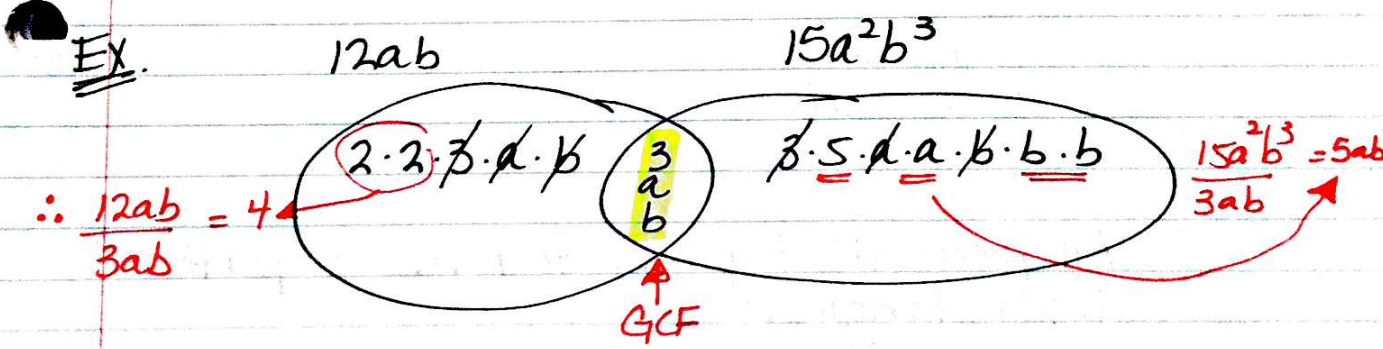


Factoring #1 - Taking out the GCF



Step #1 - Finding the GCF (greatest common factor)



Ex. $12x^3 - 6x^2 + 15x \rightarrow 3x(12x^3 - 6x^2 + 15x) \rightarrow 3x(4x^2 - 2x + 5)$

Ex. $5xy^2z^2(25xy^2z^4 - 20x^2y^4z^2 + 30x^4y^2z^5)$

$5xy^2z^2$

$= 5xy^2z^2(5z^2 - 4xy^2 + 6x^3z^3)$

check by expanding question