

# CELLS alive! - Mitosis Phase Worksheet

(Match the picture to the phase & tell what's happening now.)

## **Interphase(1)(G)**

The phase between successive mitotic divisions on the cell

## **Prophase (F )**

When a cell starts the first stage of division

## **Prometaphase (A)**

The second phase starts and the nuclear envelope breaks down

## **Metaphase (E)**

Stage 2 of cells dividing and the chromosomes are lined up

## **Anaphase (H)**

The stage of meiotic cell division and the cell is separating the insides

## **Telophase (C)**

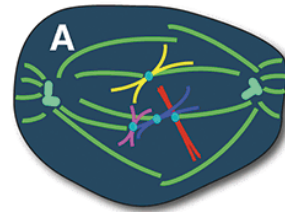
The last stage of cell division and the cells start to separate

## **Cytokinesis(D)**

The cytoplasmic division of a cell

## **Interphase(2)( B)**

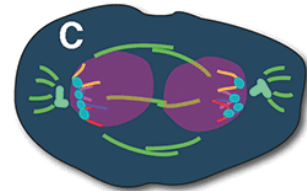
The cells are divided and the process starts over again



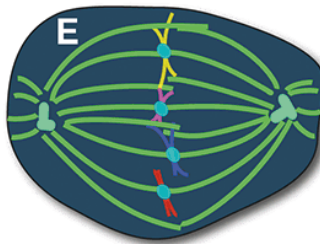
A) Prometaphase



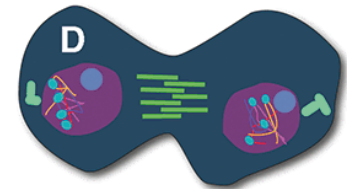
B) Interphase 2



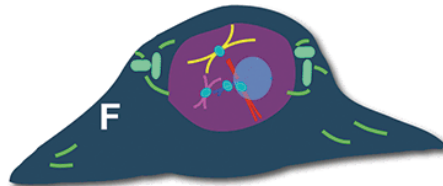
C) Telophase



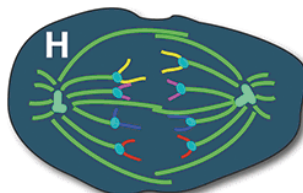
E) Metaphase



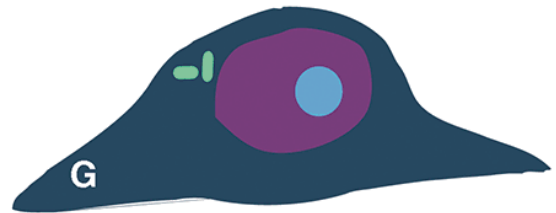
D) Cytokinesis



F) Prophase



H) Anaphase



G) Interphase 1