

CELLS alive! - Mitosis Cell Parts Worksheet

(Draw a line to the part in the [picture] and give its function.)

Nucleus [A]

the central and most important part of an object, movement, or group, forming the basis for its activity and growth.

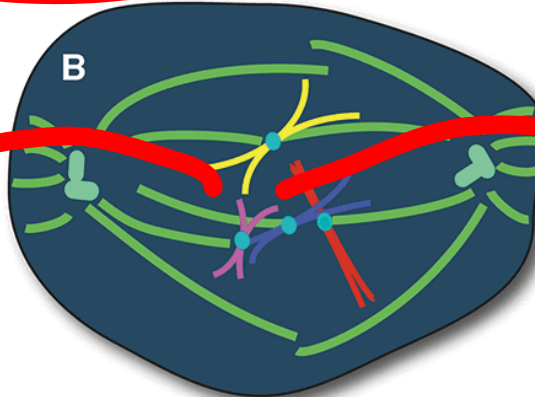


Nucleolus [A]

a small dense spherical structure in the nucleus of a cell during interphase.

Kinetochores [B]

another term for centromere.

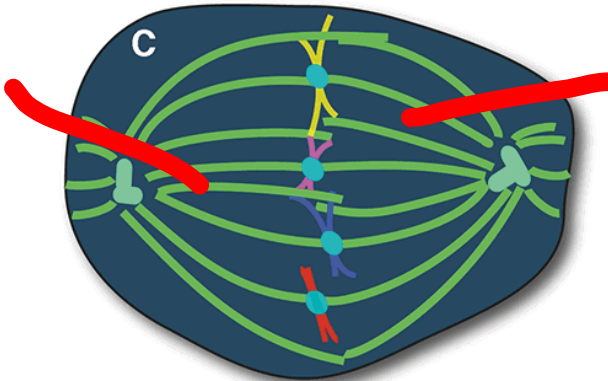


Chromatid [B]

each of the two threadlike strands into which a chromosome divides longitudinally during cell division. Each contains a double helix of DNA.

Spindle [C]

impale (a piece of paper) or a metal spindle for temporary filing purposes.

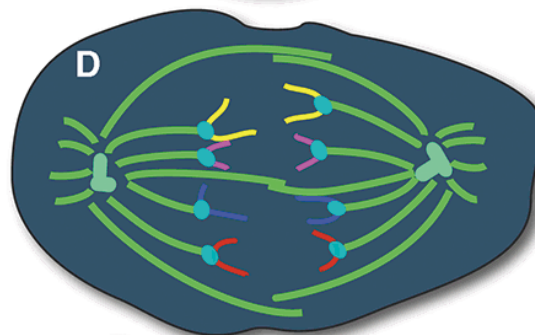


Microtubule [C]

a microscopic tubular structure present in numbers in the cytoplasm of cells, sometimes aggregating to form more complex structures

Cytoplasm [D]

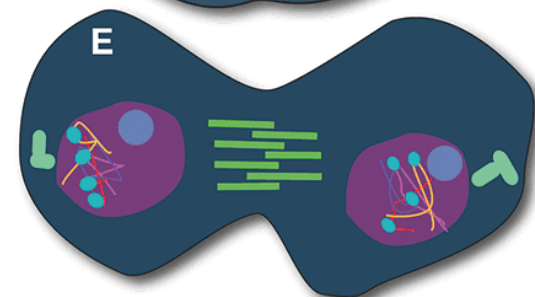
the material or protoplasm within a living cell, excluding the nucleus.



Centrosome [D]

an organelle near the nucleus of

Cleavage Furrow [E]



Contractile Ring [E]