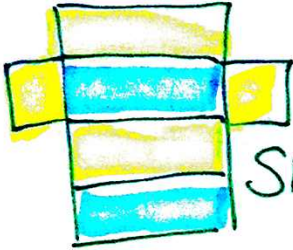




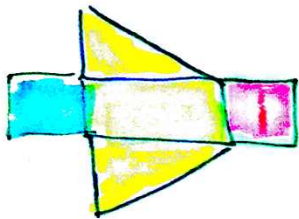
$$SA = 6 \cdot s^2$$

$$V = s^2 \cdot H$$



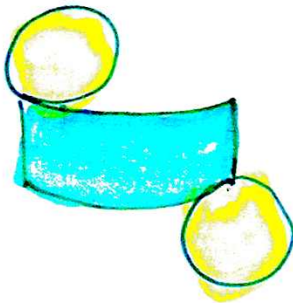
$$SA = 2lw + 2wh + 2lh$$

$$V = l \cdot w \cdot H$$



$$SA = 2\left(\frac{bh}{2}\right) + bh + bh + bh$$

$$V = \frac{bh}{2} \cdot H$$



$$SA = 2\pi r^2 + 2\pi rh$$

$$V = \pi r^2 \cdot H$$

SA = area of all the sides added together

$$V = (\text{area of base}) \cdot H$$