

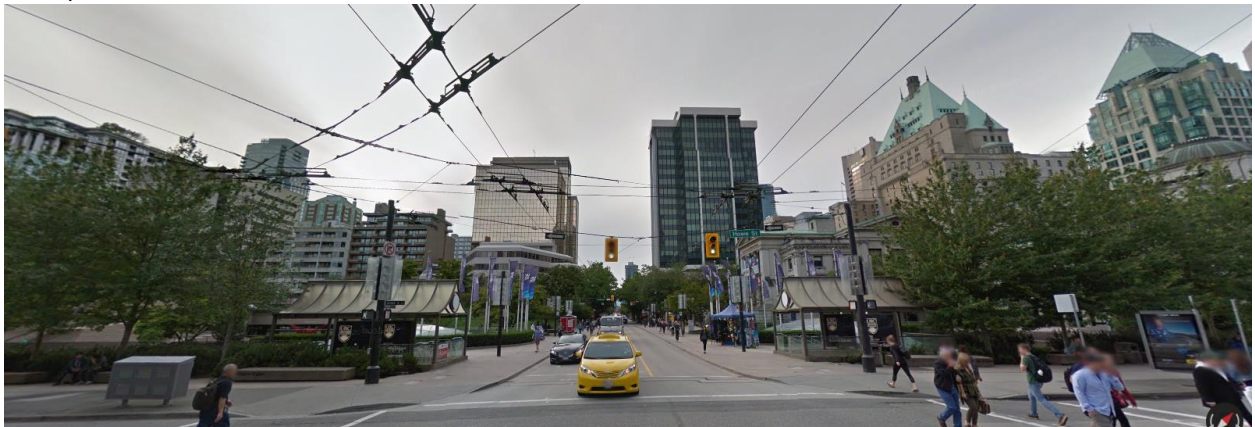
5 Themes of Geography Practice – Place

1) Use the image to describe the human characteristics of this place:

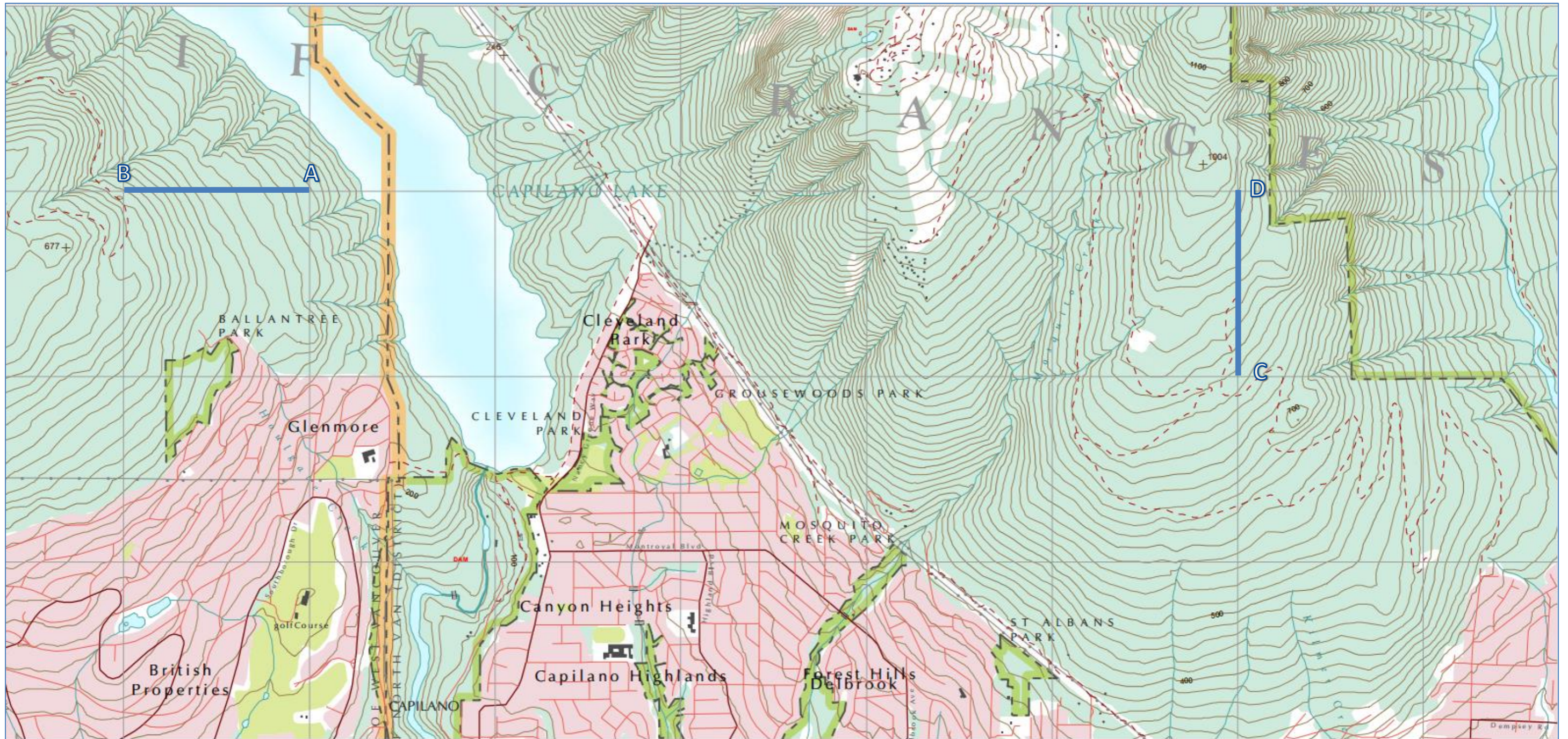
a)



b)

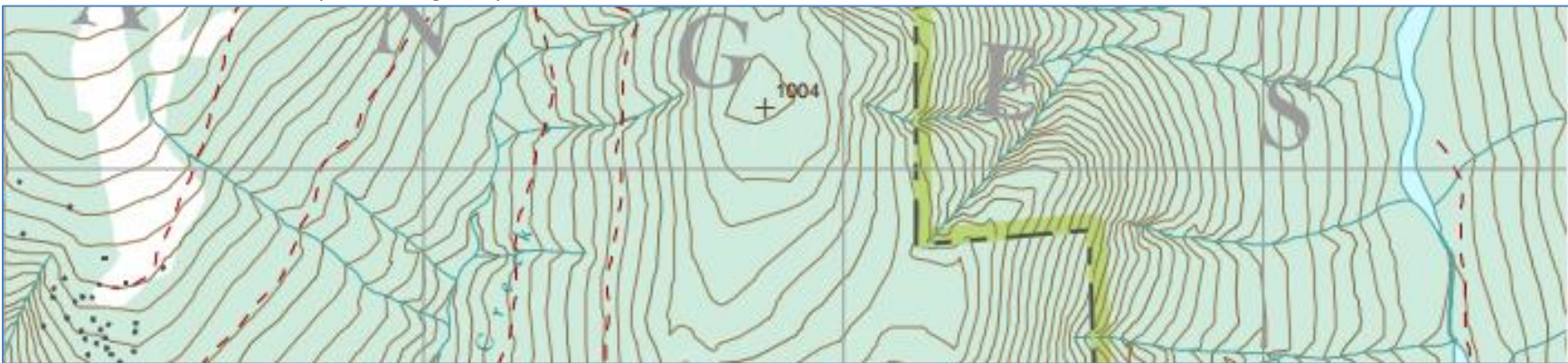


- 2) Use the map of North Vancouver to answer the questions below:
- a) How many V-Shaped creeks are shown on the western mountain?
 - b) How many mountain peaks are shown?
 - c) What is the highest spot elevation shown?
 - d) Which mountain peak is the highest?
 - e) Use a highlighter to outline all V-Shaped and U-Shaped valleys.
 - f) How far up the mountain do the British Properties extend?
 - g) How far up the mountain does the Cleveland Park area extend?
 - h) What is the approximate gradient of line A-B and C-D?
 - i) What are the real distances of line A-B and C-D?
 - j) On the map, highlight a convex slope, concave slope, and even slope. Label the slope types.
 - k) What is the approximate spot elevation of the building shown in Glenmore?



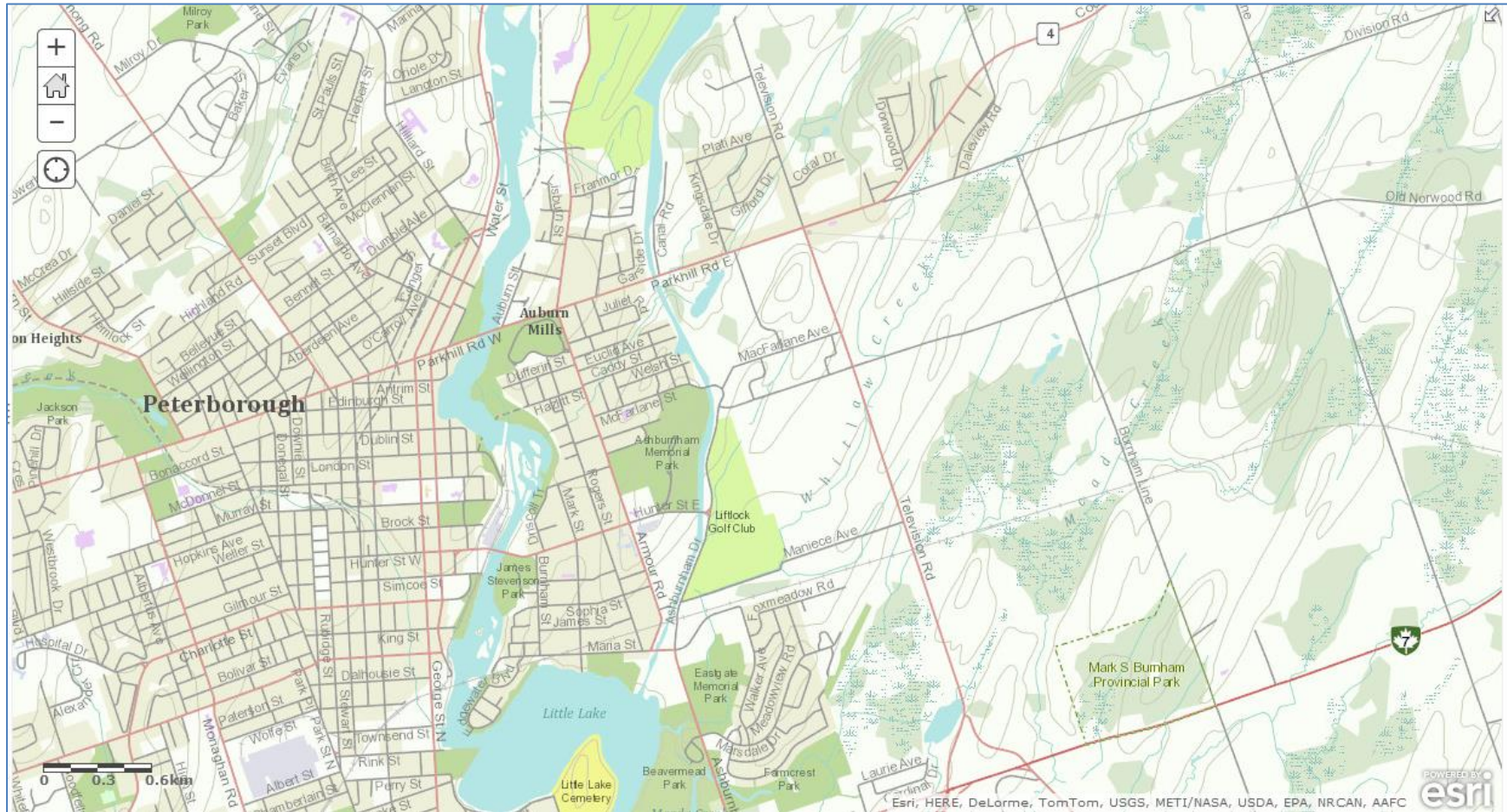
Contour lines are 10m in elevation
Each grid spacing is 1000m

- 3) Create a profile of the map along the center horizontal gridline below:
(hint: start from a lowest point or highest point)



- a) Find the approximate gradient and distance of each slope.

4) Use the map of Peterborough to describe its place:
(use all the concepts discussed and be specific.)



Assume contour lines are 10m

